

# makeup makeover

Start the New Year by cleaning out and freshening up your makeup drawer.

1. For a just-went-to-the-Caribbean-on-vacation look, pick up **Clinique Bronzer/Blender Brush**. \$32.50 at Bloomingdale's and Macy's; Stay naturally porefect in **Clinique Stay Matte Sheer Pressed Powder** in Stay Beige. \$18.50 at Bloomingdale's and Macy's; 2. Get technical about it with **Clinique Eye Definer**. \$16.50 at Bloomingdale's and Macy's; Look alive and ready to take on the world when you brush on **Awake Pure Eye Color** in Royal Plum. \$18 at Bath & Body Works and C.O. Bigelow; 3. **Japonesque Retractable Lip Brush** lets you apply and then hide. \$12 at Ulta; **Dr. Hauschka Lipstick** in Effetuoso gives lips living warmth in a velvety, shimmering Bordeaux colour. \$21 at Sephora; 4. **H2O+ Eye Shadow Contour Brush** makes it easy to achieve a perfect application. \$13.50, H2O+; Be mysteriously sparkly in **Awake Pure Eye Color** in Aster Purple. \$18 at Bath & Body Works and C.O. Bigelow; 5. All good things start with a solid base. Get **Sue Devitt Eye Base Brush**. \$65 at Sephora; Stay sultry and mysterious when you mask you eyes in **Dr. Hauschka Eye Shadow** in Smoky Violet or be romantic in Cool Pink. \$17.95 at Sephora; 6. **MUD Angle Contour Brush #700** will point you in the right direction. \$25 at www.mudshop.com; Sweep rosy color onto the apples of your cheeks with **Sue Devitt Silky Blush** in Belize. \$20 at Sephora. 7. Even out your complexion in seconds flat with **Smashbox Foundation Brush #13**. \$34 at Bloomingdale's and Nordstrom; 8. Just make sure to stay on its good side. **Smashbox Double-Ended Smudger Brush #20**. \$30 at Bloomingdale's and Sephora.



It's OK to be a little starry-eyed when you wear **Philosophy Supernatural Finger Paints** in Cool. \$25 at Sephora.



There's no easier way to pump up the volume than layering on **Sue Devitt Amplifying Mascara**. \$28 at Sephora.



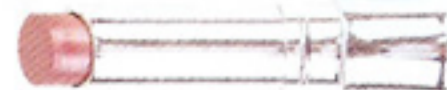
Be good to yourself and the environment when you apply **All About Terra Gloss** in Dawn. \$6 at Whole Foods.



Don't get spooked by how smooth skin appears when you use **Philosophy Supernatural Airbrushed Canvas** in Beige. \$35 at Sephora.



**Japonesque Touch-Up Tube Set** has a brush to cover up bases—and faces for that matter. \$15 at Ulta.



**Clinique Color Surge Butter Shine Lipstick** in Perfect Plum promises to make lips look juicy and oh-so-kissable. \$14 at Bloomingdale's and Macy's. ■